

The State of West Virginia

2020

Total of listed Types and Towns: 292



2.4214



2.4274



2.4694

The normal state abbrev is W. VA. unless listed (WEST VA., WV)

PIC



2.4283 WEST VA.



2.466409mixed font



4.68(42/53)

The following are illustrations of West Virginia Towns with Type Numbers.



1.1614



1.1618



1.227



1.2644



1.4113



1.4646



1.464305



1.5283



Postmark: **Westerly W. VA.**



2.4214



2.4243



2.4283



2.4282 CON



RANSON 2.44(5/9)

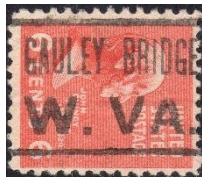


2.46



2.46005

VW



2.46(1/9)



2.4614



2.4653



2.4674



2.466454



2.467005

VW



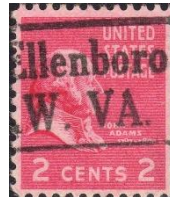
2.4696



2.5214 and another later one

2.525

2.56



2.56 CON

2.6214

2.625

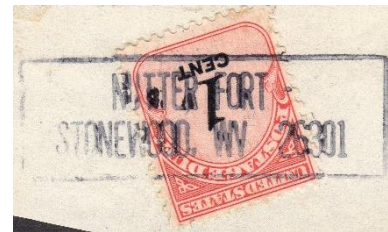


2.64(5/4)

2.64(5/9)

2.66

2.66 Charles Town



WV

2.66(1/9)

2.669

3.461005



4.4254

4.42732

4.4613



Two DLR 7.4643 towns

WEST VIRGINIA

2020

Type	Note	Town	Note	Usage
2.4263		ALBRIGHT,		1938, 40
2.4644		ALBRIGHT	CQ	1931
2.4263		ALDERSON	CQ	1926, 31, 38
2.46		ALDERSON,		1931, 31D
2.64(5/9)		ALDERSON		1958
4.4254		ALDERSON	CQ	1916, 23
2.425		AMHERSTDALE	CQ	1922
2.461		BARBOURSVILLE	CQ	1933
2.56		BARBOURSVILLE,		1954
2.64(5/9)		BARBOURSVILLE		1938
2.4214		BARRACKVILLE	CQ	1926, 38
2.4254		BECKWITH,		1922
1.1623		BEESON,		1963
2.46441		BELLE	CQ	1926
2.5214		BERKELEY SPRINGS	CQ	1926
2.46		BERWIND,		1926
2.4663		BERWIND	CQ	1938
2.46		BETHANY,		1923, 32
1.1643		BIG CREEK,		1917
2.46	CON	BLACKSVILLE,		1938
4.4254		BLAIR		1926
1.1283		BLUEFIELD,		1912, 13
1.16		BLUEFIELD,		1913
1.26		BLUEFIELD,		1908, 13
1.2663		BLUEFIELD,		1925SD
2.4254		BRIDGEPORT,		1926
2.460005		BRIDGEPORT / WV	CQ	1968
1.4113		BURNSVILLE,		1917, 22
2.4283	PIC	BURNSVILLE / WEST VA.	CQ	1954
2.46	CON	CAIRO,		1954
2.466454		CAIRO,		1938
2.4214		CAMERON,		1926
2.46		CAMERON,		1908
4.42732		CASS		1923, 26
2.46	CON	CHARLESTON,		1931D, 54, 59D
2.46		CHARLESTON / WV	CQ	1968
1.56		CHARLESTOWN,		1913
2.66		CHARLES TOWN,		1914, 17
2.461005		CHARLTON HEIGHTS / WV	CQ	1968
2.46		CHESTER,		1923, 26
2.4654		CHESTER		1931

1.46546		CLAY,	1952
2.42831		CLAY,	1926
2.467005		CLINTONVILLE, / WV	1968
7.4643	DLR	CLINTONVILLE	1914
4.68(42/53)	PIC	CUMBERLAND	1917
7.4643		CURTIN	1917, 22
2.466409	PIC	DAILEY, WV	1988
2.4283		DAVIS,	1926
2.46		DAVIS,	1954
2.46	CON	DAVIS,	1938, 54
2.4674		DAVIS,	1926, 31, 32, 38
1.125		DAWSON,	1917
2.625		DELBARTON	1938
2.4263		DUNBAR,	1938
2.4293		DUNBAR	CQ 1931
2.46		DUNBAR,	1926, 31
2.46	CON	DUNBAR,	1938, 54
2.4663		DUNBAR,	1926, 32
2.4674		DUNBAR,	1926
2.469		DUNBAR	1938, 40
2.46		EDMOND,	1914
2.4263		ELIZABETH,	1926, 32
2.46		ELLAMORE,	1931
2.625		ELLENBORO	1938
2.46		ETHEL,	1923, 26
2.425		FAIR VIEW,	1922
1.4646		FAIRVIEW	CQ 1922
2.4263		FAIRVIEW	CQ 1922, 30, 32
2.46		FARMINGTON,	1938
2.4643		FAYETTEVILLE,	1931, 38
2.64(5/9)		FAYETTEVILLE	1938
2.4254		FOLLANSBEE	1917, 18
2.461		FOLLANSBEE	CQ 1922
1.1644		FORT GAY,	1954
2.46	CON	FRANKLIN,	1954
2.4653		FRANKLIN,	1938, 48
2.56		FRANKLIN,	1938, 54
2.465		FRIENDLY	CQ 1932
2.46		GASSAWAY,	1926, 31
2.669		GASSAWAY	CQ 1954
1.2254		GAULEY BRIDGE,	1934
2.4214		GAULEY BRIDGE,	1928SD, 31
2.4243		GAULEY BRIDGE,	1928SD, 38
2.460005		GAULEY BRIDGE, / WV	eVL 1968

2.46(1/9)		GAULEY BRIDGE		1938, 54
2.46	CON	GILBERT,		1963
2.460005		GILBERT, / WV		1954
2.4653		GLASGOW,		1938, 43
2.46	CON	GLENVILLE	CQ	1954
2.64(5/9)		GLENVILLE		1938
2.4663		GORMANIA,		1926, 31
2.46		GRAFTON	CQ	1908
2.4214		GRANTSVILLE,		1931
2.4243		GRANT TOWN	CQ	1938
2.467		HAMLIN,		1932
2.469		HAMLIN,		1938
2.4282	CON	HARPERS FERRY,		1926, 30
4.48(13/53)		HARPERS FERRY		1917
2.64(5/4)		HARRISVILLE		1938
4.4254		HARRISVILLE		1926
2.4644		HENDRICKS,		1961
2.46		HOLDEN,		1912
2.46	CON	HOLDEN,		1938
2.669		HOLDEN		1938, 45
2.4214		HOLLIDAYS COVE,		1938, 45
2.5214		HOLLIDAYS COVE,		1937
2.56	CON	HOLLIDAYS COVE,		1938
2.5614		HOLLIDAYS COVE		1932
2.466454		HUNDRED,		1938
2.6214		HUNTINGTON		1912
2.56		INDEPENDENCE,		1958
2.46		JANE LEW,		1926
2.56		JANE LEW,		1934
2.625		JANE LEW		1954
2.4283		KENOVA,		1926
2.46	CON	KENOVA	CQ	1938
2.4653		KENOVA,		1938
2.4664		KENOVA	CQ	1938
2.46	CON	KEYSER,		1954
2.4696		KEYSER	CQ	1938
2.46		KEYSTONE	CQ	1929, 31
2.465		KEYSTONE,		1926, 31, 38
2.569		KEYSTONE		1943SD
2.425		KIMBALL,		1926
2.4263		KIMBALL		1931
2.425		KINGWOOD,		1926
7.4643	DLR	LAMAR		1917
1.4643		LEAD MINE,		1954

2.4293		LEON,		1926
2.46	CON	LETART,		1954
2.64(5/9)		LEWISBURG		1938
2.4274		LOGAN,		1926, 32
2.4284		LUMBERPORT,		1938
2.465		MADISON	CQ	1926
2.5254		MAPLEWOOD,		1928
2.4263		MARLINTON,		1926, 39
2.465		MARLINTON,		1926, 31
2.669		MARLINTON		1938
2.425		MARTINSBURG,		1914, 17
2.463*4		MARTINSBURG	CQ	1908
2.56		MARTINSBURG	CQ	1912, 22
2.4663		MATEWAN,		1926
2.46		MATOAKA	CQ	1926
2.4663		MATOAKA	CQ	1932
1.1614		MCMECHEN,	SMc	1938
2.4214		MCMECHEN,	SMc	1923, 30
2.4213		MIDDLEBOURNE,		1931
2.4613		MIDDLEBOURNE	CQ	1938
2.56		MIDDLEBOURNE		1908, 17
2.64(5/9)		MIDDLEBOURNE	CQ	1938
2.46	CON	MILTON,		1959
2.4694		MILTON		1938, 52A, 54
4.4644		MILTON		1938
2.425		MOATSVILLE,		1931
2.4214		MONTGOMERY	CQ	1932
2.425		MONTGOMERY	CQ	1917
2.4653		MONTGOMERY,		1926, 31, 32, 38, 43
2.625		MONTGOMERY	CQ	1938
2.64(5/9)		MONTGOMERY		1938, 53
2.460005		MONTROSE, / WV		1947
2.461		MOOREFIELD,		1914
1.1273		MORGANTOWN,		1925SD
1.1644		MORGANTOWN,		1925SD
2.66		MORGANTOWN	CQ	1912, 13
2.4653		MOSGOW,		1943
1.2243	PRO	MOUNDSVILLE,		1912, 14
2.4214		MOUNDSVILLE,		1914
2.56		MOUNDSVILLE,		1908
2.66		MOUNDSVILLE,		1913
7.4643		MOUNT HOPE		1938
1.1644		NEWBURG,		1954
2.46		NEWBURG	CQ	1912

2.4613		NEW CUMBERLAND,		1938
2.46(1/4)		NEW CUMBERLAND		1938
2.56		NEW CUMBERLAND	CQ	1954
2.64(14/44)		NEW CUMBERLAND	CQ	1931
4.68(43/53)		NEW CUMBERLAND		1917
2.4293		NEWELL,		1926, 31, 32, 34
2.46		NEWELL,		1922, 26, 28SD, 31, 37, 38
2.467		NEWELL,		1922
2.5614		NEW MARTINSVILLE,		1913, 17
2.4274		NITRO	CQ	1926
2.4283		NITRO	CQ	1926
2.46		NITRO,		1954
2.46		NORTHFORK		1914
2.4654		NORTHFORK	CQ	1922
0.4673		NORTHFORK,		1926
2.525		NUTTER FORT	CQ	1931
3.461005		NUTTER FORT- / STONEWOOD, WV		1959D
2.46		OAK HILL,		1926, 32, 36, 37, 40
2.460005		OAK HILL, / WV		1975
4.4254		OAK HILL		1926
2.4293		OMAR,		1939
2.46		OMAR,		1922, 26
2.469		OMAR		1938
2.4243		PADEN CITY		1926, 31
2.4263		PADEN CITY,		1926, 31, 38
2.4663		PADEN CITY,		1922, 31
2.467005		PADEN CITY, / WV		1968
2.64(5/9)		PADEN CITY		1938
2.64(54/94)		PADEN CITY	CQ	1958
4.4613		PARKERSBURG		1922, 23, 26, 30, 32
4.4253		PARSONS		1917, 21
4.4274		PARSONS		1926, 32
2.46	CON	PAW PAW	CQ	1954
2.46		PETERSBURG	CQ	1914
2.460005		PHILIPPI, / WV		1952
1.1618		PICKENS,		1954
7.4643	DLR	PIEDMONT		1917
2.4263		PINE GROVE,		1926, 31
2.465		PINE GROVE	CQ	1926, 31
2.64(5/9)		PINE GROVE		1938
2.669		PINE GROVE		1938
2.425		PINEVILLE	CQ	1926
2.669		PINEVILLE		1938, 39
2.4243		POINT PLEASANT	CQ	1928SD, 38

2.4614		POINT PLEASANT,		1922
2.5214		POINT PLEASANT	CQ	1914
2.56		POINT PLEASANT	CQ	1954
2.66(4/9)		POINT PLEASANT		1938, 52
4.4644		POINT PLEASANT		1938
2.4254		PRINCETON	CQ	1931
2.4263		PRINCETON,		1926, 31, 32
2.46		PRINCETON,		1930
2.669		PRINCETON		1938
2.46		PROCTOR,		1926, 32
2.44(5/9)		RANSON		1938, 53
2.46		RANSON,		1938
2.4653		RANSON,		1931D
2.4254		RAVENSWOOD	CQ	1922
2.56		RAVENSWOOD	CQ	1954
2.64(5/4)		RAVENSWOOD	CQ	1938
1.1623		REEDY,		1926
1.2644		REEDY,		1926, 31, 37
2.46		RENICK		1917
2.467005		RICHWOOD, / WV		1993
2.46		RIPLEY,		1917
2.46		RIVESVILLE,		1931
2.64(5/9)		RIVESVILLE		1938
2.4243		RONCEVERTE,		1931
2.4254		RONCEVERTE,		1931, 32
2.56		ROWLESBURG	CQ	1954
2.64(5/9)		SABRATON	CQ	1938
2.4243		SAINT ALBANS,		1926
2.4214		SAINT ALBANS,		1926, 31, 38, 40
2.46		SAINT ALBANS,		1938
2.625		SAINT ALBANS	CQ	1938
2.425		SAINT MARYS	CQ	1914, 22
2.4214		SAINT MARYS,		1931
2.5214		SHEPHERDSTOWN	CQ	1917
1.4673		SISTERSVILLE	CQ	1922
1.5283		SISTERSVILLE	CQ	1917, 18, 22, 26
2.4214		SISTERSVILLE,		1922, 26, 37, 38, 40
2.4243		SISTERSVILLE,		1926, 30
2.465		SISTERSVILLE	CQ	1931
2.56		SISTERSVILLE,		1954
2.64(5/9)		SISTERSVILLE		1938
2.64(5/9)	VAR	SISTERSVILLE	CQ	1954
2.66		SISTERSVILLE,		1908, 12
2.569		SMITHERS		1954

2.4263		SMITHFIELD	CQ	1926
2.66		SMITHFIELD,		1913
1.464305		SPENCER / WV		1954, 61, 68
2.460005		SPENCER, / WV		1968
1.227		SPRIGG,		1934
1.2254		TERRA ALTA,		1908
2.46	CON	THOMAS,		1954
2.4653		THOMAS,		1938
2.46	CON	UFFINGTON	CQ	1954
2.4284		UNION,		1926
1.161405		VOLGA, WV		1951
2.42932		WAR,		1933
2.4654		WEBSTER SPRINGS,		1938
2.66(1/9)		WEBSTER SPRINGS		1938
1.4646		WEIRTON	CQ	1938
2.4656		WEIRTON	CQ	1926
2.46	CON	WELCH,		1923
2.467		WELCH	CQ	1931
2.46		WELLSBURG	CQ	1922, 26
2.64(5/9)		WELLSBURG	CQ	1938
2.46	CON	WEST UNION,		1954, 58
2.465		WEST UNION,		1926, 38
2.4653		WEST UNION	CQ	1926, 33
1.7664309		WHITE SULPHUR SPRINGS, WV / STATION A / 24686		1954
2.4214		WHITESVILLE,		1932
2.64(5/4)		WHITESVILLE	CQ	1938
2.669		WHITESVILLE		1938
2.525		WILLIAMSTOWN	CQ	1917
2.46		WINFIELD	CQ	1938
2.4644		WINFIELD,		1923
2.669		WINONA		1938